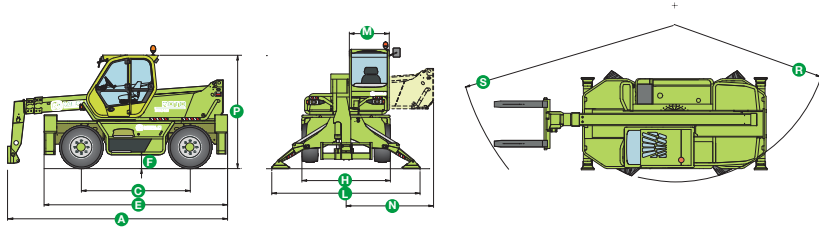


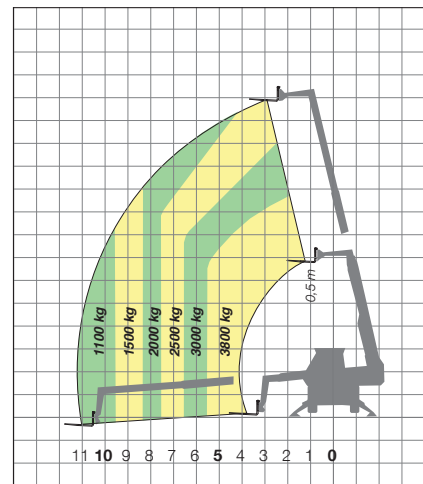
ROTO 38.14 / ROTO 38.14 S



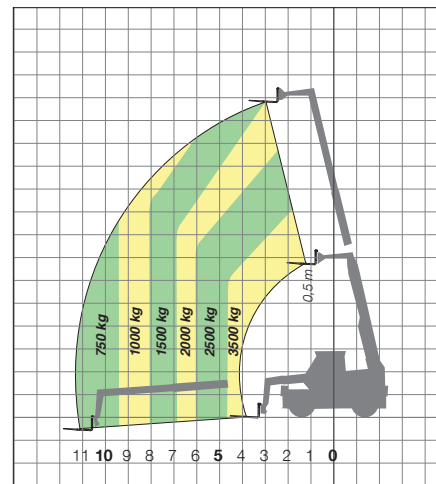
DIMENSIONES ROTO 38.14 / ROTO 38.14 S

| | | | | | |
|--------|------|--------|------|--------|------|
| A (mm) | 5565 | H (mm) | 2240 | P (mm) | 2850 |
| C (mm) | 2760 | L (mm) | 3750 | R (mm) | 3920 |
| E (mm) | 4645 | M (mm) | 995 | S (mm) | 5380 |
| F (mm) | 350 | N (mm) | 2220 | | |

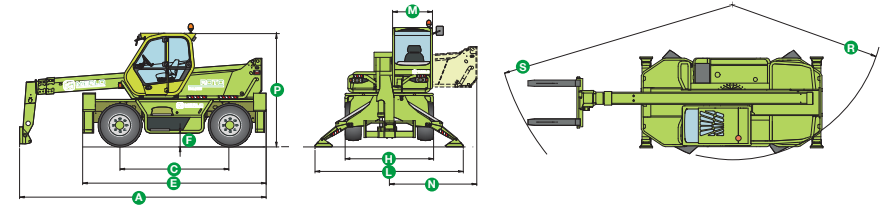
ROTO 38.14 / ROTO 38.14 S
HORQUILLA SOBRE ESTABILIZADORES A 360°



ROTO 38.14 / ROTO 38.14 S
HORQUILLA SOBRE NEUMÁTICOS FRONTAL



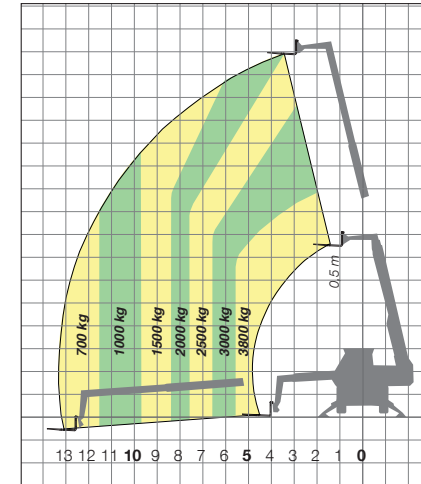
ROTO 38.16 / ROTO 38.16 S



DIMENSIONES ROTO 38.16 / ROTO 38.16 S

| | | | | | |
|--------|------|--------|------|--------|------|
| A (mm) | 6240 | H (mm) | 2240 | P (mm) | 3020 |
| C (mm) | 2760 | L (mm) | 3750 | R (mm) | 4050 |
| E (mm) | 4645 | M (mm) | 995 | S (mm) | 6000 |
| F (mm) | 350 | N (mm) | 2220 | | |

ROTO 38.16 / ROTO 38.16 S
HORQUILLA SOBRE ESTABILIZADORES A 360°



ROTO 38.16 / ROTO 38.16 S
HORQUILLA SOBRE NEUMÁTICOS FRONTAL

