

MAIN DIMENSIONS	
Service weight* (kg)	5.380
Total width (mm)	1.840
Overall height (mm)	2.555
Transport length - dozer blade at the rear (mm)	5.855
Digging depth (mm)	3.620
Reach (mm)	5.980
Arm length (mm)	1.600
Tail swing radius (mm)	1.360
Tracks	Rubber
Track width (mm)	400
Ground contact (mm)	1.975
Ground pressure (kg/cm ²)	0,29
Ground clearance (mm)	335
Dozer blade dimensions (mm)	1.840 x 430

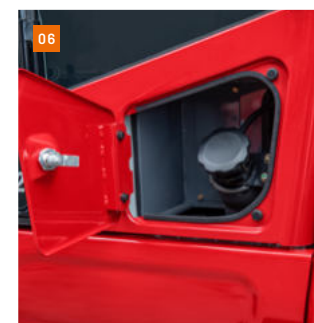
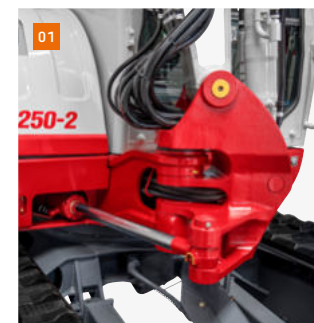
* Machine weight + PT + HUPPPlate + medium size bucket + half a tank of diesel

ENGINE	
Type	Yanmar 4TNV88C 4-cylinder diesel engine, turbocharger, Stage V emission level
Exhaust aftertreatment	DPF and DOC
Rated output ISO14396 (kW)	29,1 kW @ 2.400 r.p.m.
Displacement (cm ³)	2.189
Fuel tank (l)	70

WORK PERFORMANCE	
Travel speed (km/h)	2,8 (1 st gear) / 5,2 (2 nd gear)
Slew speed (rpm)	9,5
Gradeability (degrees/%)	30 / 58
Boom swing angle l/r (°)	70 / 55
Digging force bucket (kN)	37,3
Digging force arm (kN)	24,8
Digging force boom (kN)	26,5

HYDRAULIC SYSTEM	
Hydraulic pumps	2 x variable axial piston pump + 2 x gear pump
Pump pressure (bar)	240 x 240 x 206 x 34
Flow rate (l/min)	52,8 x 52,8 x 38,9 x 10,8
Hydraulic tank (l)	45 (tank) / 95 (total)
Slew motor type	Axial piston motor, rigid
Travel motor type	Axial piston motor, variable

AUXILIARY CONTROL CIRCUITS	
1 st control circuit hydraulic breaker (l / min) adjustable flow rate 3 memories for the flow rates	91,7
2 nd /4 th control circuit Powertilt / grab (l / min) adjustable flow rate 1 memory for the flow rate	38,9



01 Robust boom swing assy with specially protected hose guide and hydraulic boom swing; lifting and swing cylinder with end position damping.

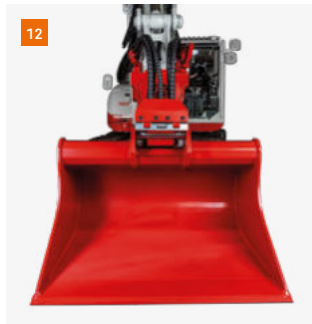
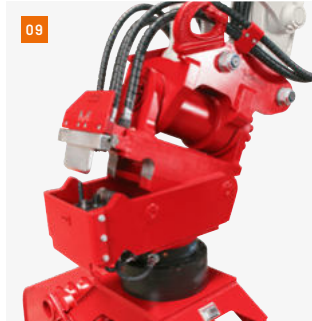
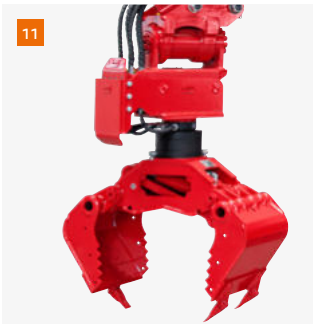
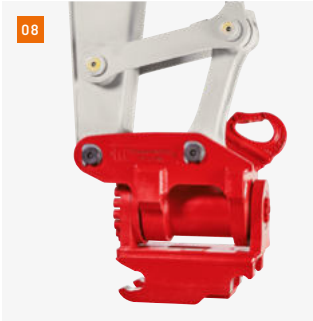
02 Sound-damped, low-vibration comfort cab with mechanically cushioned comfort seat.

03 Optimally arranged controls and a clear display with visual and acoustic monitoring units. ECO mode to increase economy and reduce diesel consumption.

05 Generous maintenance hatches for optimum accessibility to hydraulic and fuel maintenance components, battery and radiator.

06 Lockable refuelling flap

07 Track rollers with inner and outer guide for safe rubber track running. Double short-pitch rubber tracks for low-vibration driving.



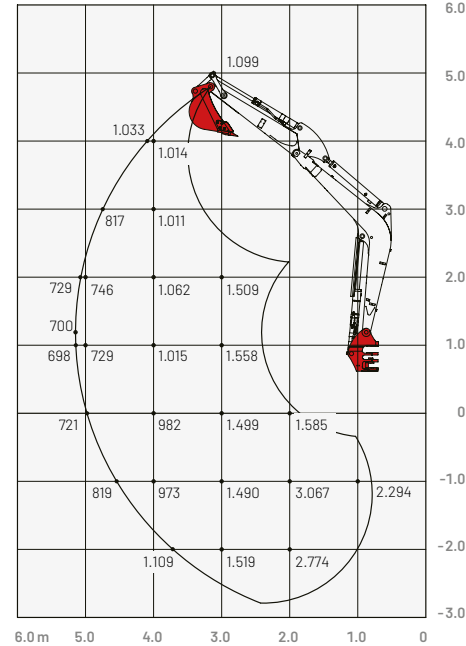
- 08 HUPPTilt tilt device with hydraulic quick change plate HUPPPlate H
- 09 HUPPQuick quick coupling system: Hydraulic connections are connected automatically during the quick coupling process
- 10 HUPPBreak hydraulic breaker 302 with HUPPQuick
- 11 HUPPGrip universal grabber UG05 II with HUPPTilt
- 12 HUPPTilt with HUPPPlate H, digging bucket can be mounted as high bucket
- 13 Earth drill - 4500 MAX
- 14 Add-on compactor - Ammann APA20/30
- 15 Wood grapple - Lasco LA1200HZ



More accessories at
[huppenkothen.com/
 excavator-accessories](http://huppenkothen.com/excavator-accessories)

Lifting load (kg) TB250-2 cabin

Forward (upper dozer blade)



The loads in the diagram are within 87% of the hydraulic lifting load and within 75% of the tipping load.

Dimensions (mm) TB250-2 cabin

